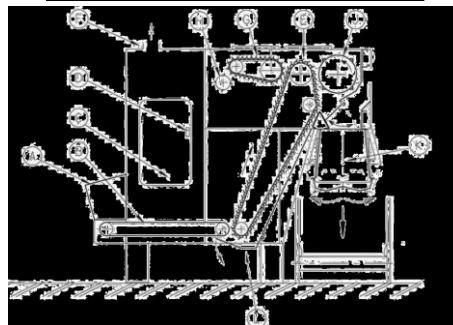
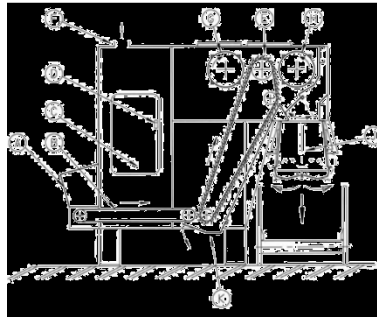


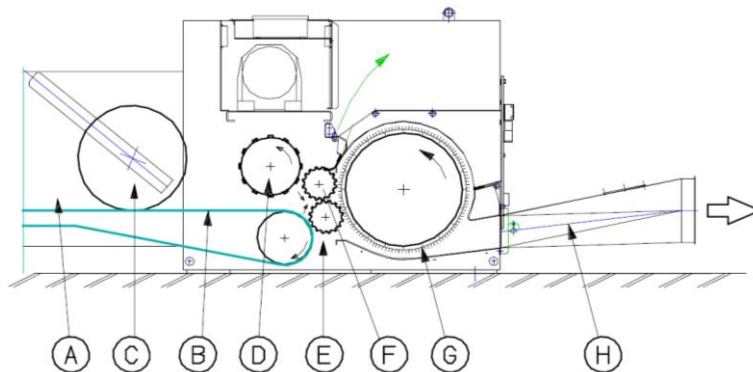


| Baleopener1 | |
|-------------|--------------------------|
| A | Feeding basket |
| B | Horizontal conveyor |
| C | Reserve chamber |
| D | Material level control |
| E | Vertical spiked conveyor |
| F | Dedusting |
| G | Recycling roll |
| H | Stripper roll |
| J | Weighting pan |
| K | Cleaning door |

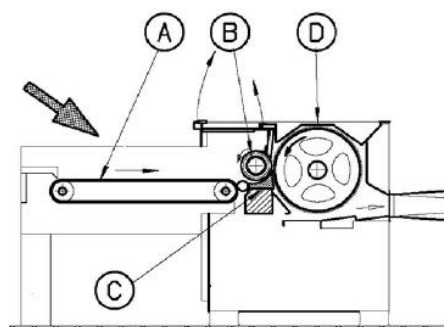


| Baleopener2 | |
|-------------|--------------------------|
| A | Feeding basket |
| B | Horizontal conveyor |
| C | Reserve chamber |
| D | Material level control |
| E | Vertical spiked conveyor |
| F | Dedusting |
| G | Recycling conveyor |
| H | Stripper roll |
| J | Stripper roll |
| K | Weighting pan |
| L | Cleaning door |

| HorizontalDpener | |
|------------------|--------------------------|
| A | Feeding |
| B | Feeding conveyor |
| C | Movable pressing roll |
| D | Adjustable pressing roll |
| E | Stationary grooved roll |
| F | Movable grooved roll |
| G | Opening cylinder |
| H | Pneumatic conveying |



| Fineopener | |
|------------|------------------|
| A | Feeding conveyor |
| B | Feed roller |
| C | Feed dish |
| D | Opening cylinder |
| E | Fibre blower |



Fibresubrication
Up to 10% fibresubrication

Automatic metal detection
Before feeding the card or Airlay



View of the card

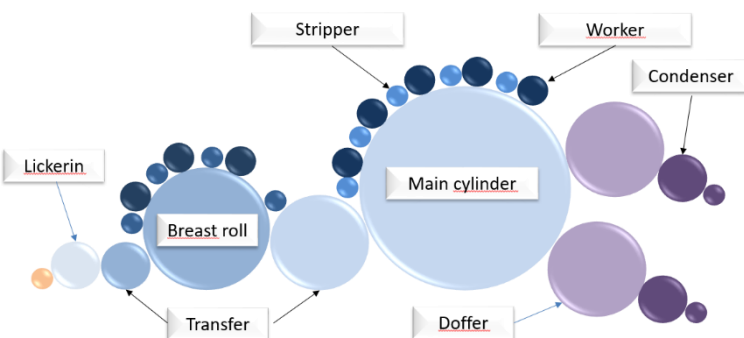
Technical data

| | |
|-----------------------------|--|
| Working width | From 500 to 1500 mm |
| Production speed | From 10 to 200 m/min in direct way From 10 to 90 m/min in undirect way (using the cross-lapper) |
| Basis weight | From 15 to 60 gsm in direct way |
| Fiber length | From 20 to 90 mm |
| Fiber linear density | From 1 to 15 dTex |
| Fibers | All type of fibers : Natural, artificial or synthetics fibers |

Fiber preparation and bonding equipment

| | |
|--------------------------|---|
| Fiber preparation | Complete installation of fibers opening and blending : bales openers, horizontal opener & fine opener. |
| Bonding equipment | <p><u>Thermal process :</u></p> <ul style="list-style-type: none"> - Air through oven (Ω) - Air through oven (flat) - Cross-lapper + Air-through oven (flat) + cooling and compacting calender - Engraved calendaring <p><u>Mechanical process :</u></p> <ul style="list-style-type: none"> - Cross-lapper + Needle-loom - Hydro-entanglement + dryer (Ω) |

Process



ANDRITZ equipment

2 sets of Doffers:

- 1 set for medium and coarse fibres
- 1 set specially designed for fine fibres

Different output configurations:

- 100% parallel web
- Condensed + parallel webs
- 100% condensed web